

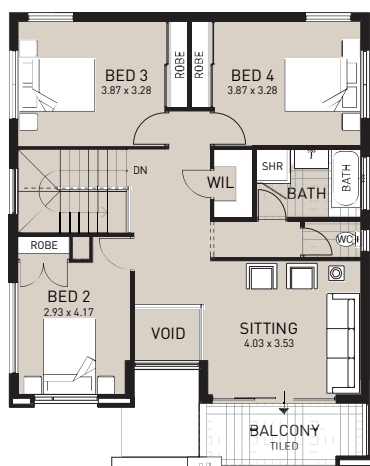
# The Melville Waters



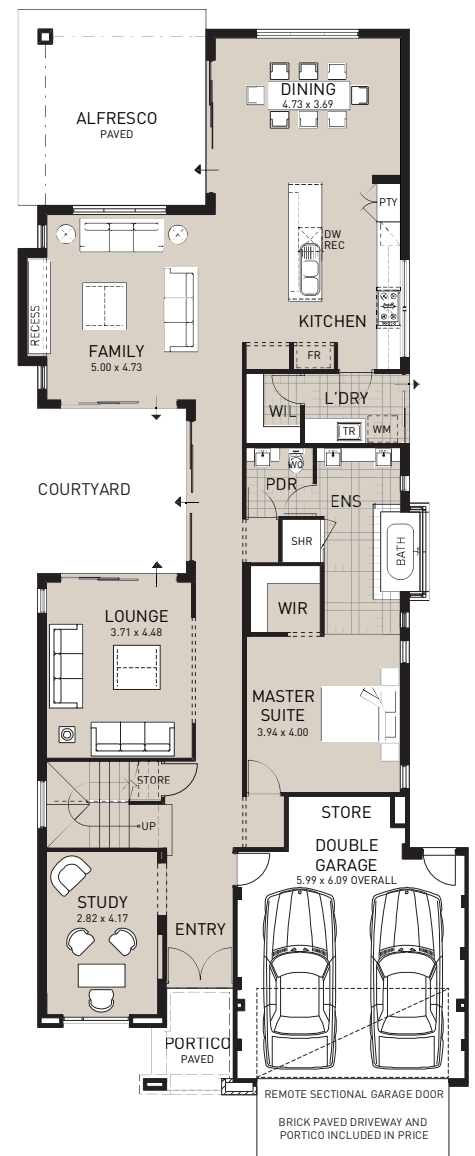
Family life and city living blend perfectly in this superbly designed narrow lot home. Step through the covered portico and you'll discover a home with all the space, comfort and function that a modern family needs. The lower level includes two separate outdoor areas, a stunning master suite and spacious open-plan living, dining and kitchen area, whilst the second level features three generously sized bedrooms and a private sitting area that opens onto a covered balcony.

## House Areas

Ground floor area:	183.18m <sup>2</sup>
Garage area:	40.05m <sup>2</sup>
Portico area:	5.22m <sup>2</sup>
Alfresco area:	24.00m <sup>2</sup>
Total area:	252.45m <sup>2</sup>
Perimeter:	79.76m
First floor area:	96.27m <sup>2</sup>
Balcony area:	7.82m <sup>2</sup>
Total area:	104.09m <sup>2</sup>
Perimeter:	41.76m
Total house area:	356.54m <sup>2</sup>
House width	11.49m
House depth	27.21m



First Floor



Ground Floor

**P** Ben Leitch 0417355586 **e**

ben.leitch@plunkettgroup.com **f**

